

WELCOME

BACK



We are so pleased to see you all. School is going to feel very different and we are sure some of you are a little worried about this. So we wanted to explain some of the changes to you and give you a chance to ask questions.



WASH YOUR HANDS

HANDWASHING ADVICE

1

**WET YOUR HANDS THEN PUT SOAP
ON THEM**

2

**RUB EVERY PART OF YOUR HAND
INCLUDING BETWEEN YOUR FINGERS**

3

**DO THIS FOR 20 SECONDS
(SING THE BIRTHDAY SONG TWICE!)**

4

**WASH THE SOAP OFF AND DRY
WITH A PAPER TOWEL**

You will see these posters up and around the school.

It is really important that you wash your hands regularly. You will be asked to wash them whenever you enter the classroom and at other times too.

Make sure you wash them following these guidelines.

WASH THEM REGULARLY



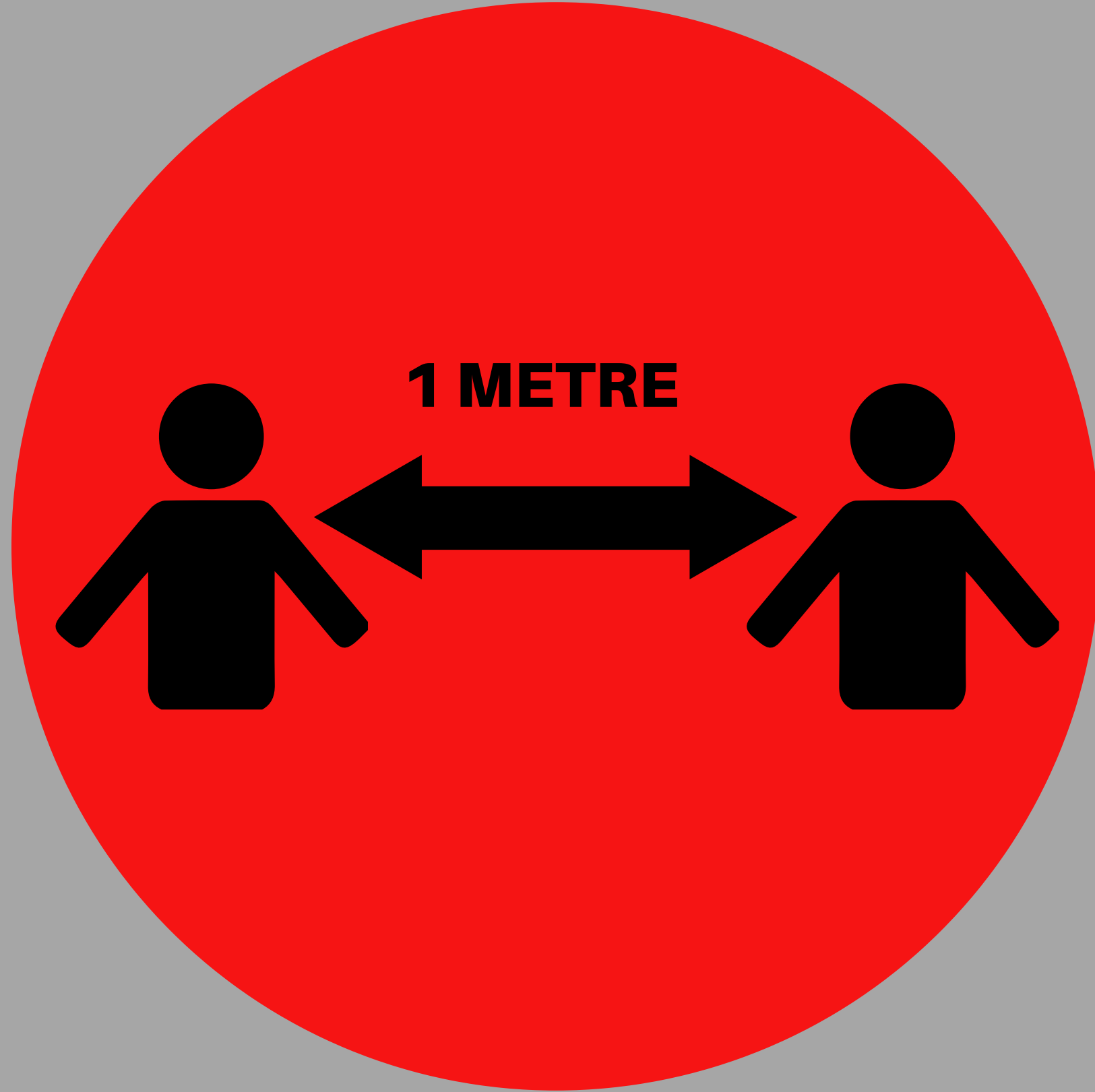
WILL I BE WITH MY NORMAL CLASS?

You will be with your class and your teacher.

At the moment it isn't safe for lots of people to be together. You will be in a bubble class which will be your class. You will not be with the rest of your year group at the moment.



CAN I GET CLOSE TO PEOPLE?



It is really important that you keep a distance between you and the adults within school. Where possible, we would like this to be at least 1 metre. The adults will be doing this also.

WHERE WILL I SIT?

This will feel different to normal as you will be sitting in rows facing the front.

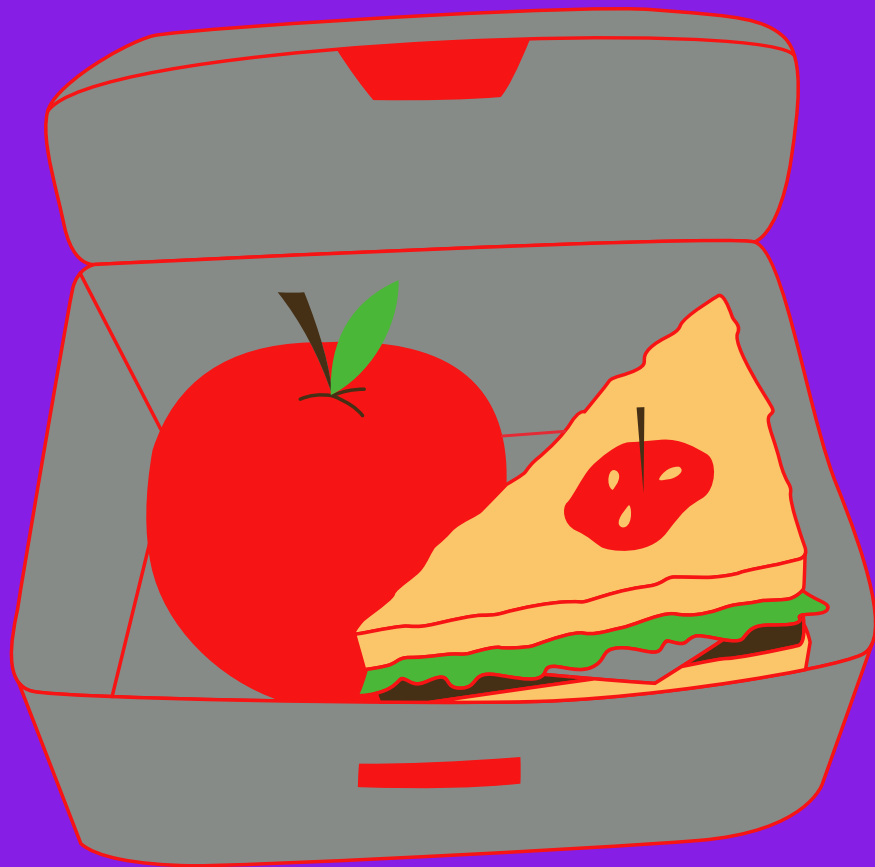
Anything you bring in must go underneath your desk. You should limit what you bring in from home.

Your desk and seat will **always** be where you sit.

At the end of every day you will put your book, pencil case and colouring pencils on your chair. Do not stack your chair.



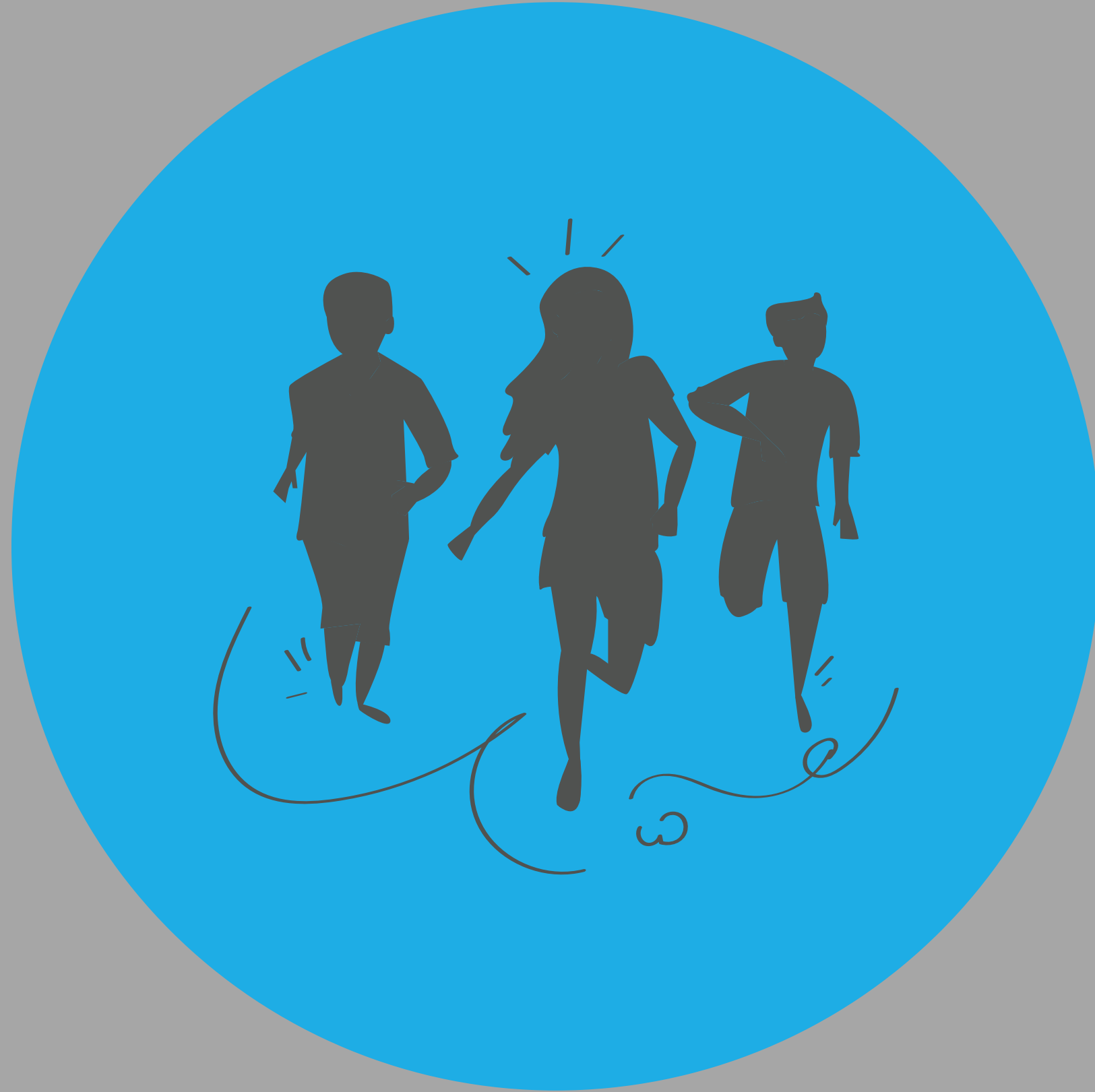
WHERE WILL I EAT LUNCH?



You will not be going into the hall at lunch time. You will be eating your lunch at either your desk in the classroom or in a space outside.

If you have ordered a lunch this will be delivered to your classroom by an adult.

WHAT WILL HAPPEN AT PLAY TIME?



You will have break times at different times to the classes you are close to. You will have play time and lunchtime with your bubble class and the adults within it.

You will have a set of play equipment for your group and these will be cleaned regularly.

Don't worry though as Mrs Palmer and Miss Jones have been thinking of some new games that are fun for you to play with the equipment you have.



WHY ARE WE COMING IN AT DIFFERENT TIMES?

It is really important that you are able to distance from one another and to help you with this we have set different start and end times to the school day.

These must be adhered to at all times.

When you leave at the end of the day it is important you leave the site quickly to minimise the numbers on site.



WILL MY TEACHER OR TEACHING ASSISTANT BE ABLE TO HELP ME?

This will be difficult when the teacher needs to keep their distance from you. You will still be able to ask questions and your teacher will be able to model things on the board.

As we get used to this new school life you will come up with new systems with your teacher.

CAN I BRING A PENCIL CASE IN FROM HOME?

No you will be given a new pencil case when you come in to school. You will have a new pen, pencil, ruler, glue stick and set of colouring pencils. You will also be given a new Big Book of Everything.



HOW DO I TRAVEL TO SCHOOL?

Please make sure you are not travelling to school on a bike or a scooter. This is to help you to be able to keep your distance from one another.

If you are in Year 6 we ask that you come on to site **without** an adult so we can reduce the number of people on the school site. This will help you to keep apart from one another.

DO NOT walk in with your friends.



WHICH ENTRANCE AND EXIT DO I USE?



ENTRANCE:

It is really important that you only come in at the main gate by Hart Plain Infant School on Hart Plain Avenue.

ONE WAY:

The one way system goes all the way around the back of the school past the art room, Franklin, Darwin, Potter and Anning rooms and then loops back on to the front playground. Look at the back doors for which classroom door you should enter.

EXIT:

Through the gate at the top of the playground on to Milton Road.

WHAT IF I NEED THE TOILET?

Your teacher will let you know which toilets you can use. It is really important that you only use this block of toilets.

The main door has been wedged open to help reduce the door handles you need to touch - please leave it open. Don't worry the individual doors can still close.

Only **ONE PERSON** is allowed in the toilets at any one time. You need to call in and if it is empty then go on in. If somebody is in there then you need to stand back in the corridor and wait for them to leave before you can go in.



WHAT IF I FEEL UNWELL?



It is really important if you feel unwell before you come into school that you tell an adult. They will then make the decision whether it is appropriate for you to come in. If you have been sick or have had diarrhoea you should not come into school. Your adult should contact the school and tell us why you are not coming in to school

If you become unwell in school you will have your temperature checked. Somebody from home will be called and will be asked to collect you and take you home.

DO I NEED TO WEAR UNIFORM?



Yes you need to be in school uniform apart from the days when you have PE. Your teacher will tell you which day PE is for you.

You need to have a pair of trainers with you at all times as we will be running as a class every day.

DO NOT wear sandals.



CAN I BRING MY MOBILE ON TO SITE?

Yes you can but this is at your own risk. The safe in the classroom will not be being used.

Your phone will have to be kept under your desk at all times and **must be** switched off during the school day.

If you use your mobile phone you will not be permitted to bring this in to school again.



WHAT IF I NEED FIRST AID?

Don't worry Mrs Wood, Mrs McGaw and Mrs Chubb will still be here to take care of you if you hurt yourself. However, they will look a little different as there are some extra bits of clothing they need to wear to help keep them and you safe. Here is a picture.

To help you further only one person is allowed in the office at a time so you may be asked to wait in the corridor near the butterflies on the wall. Some chairs have been put here spaced apart.

TIME FOR QUESTIONS...

